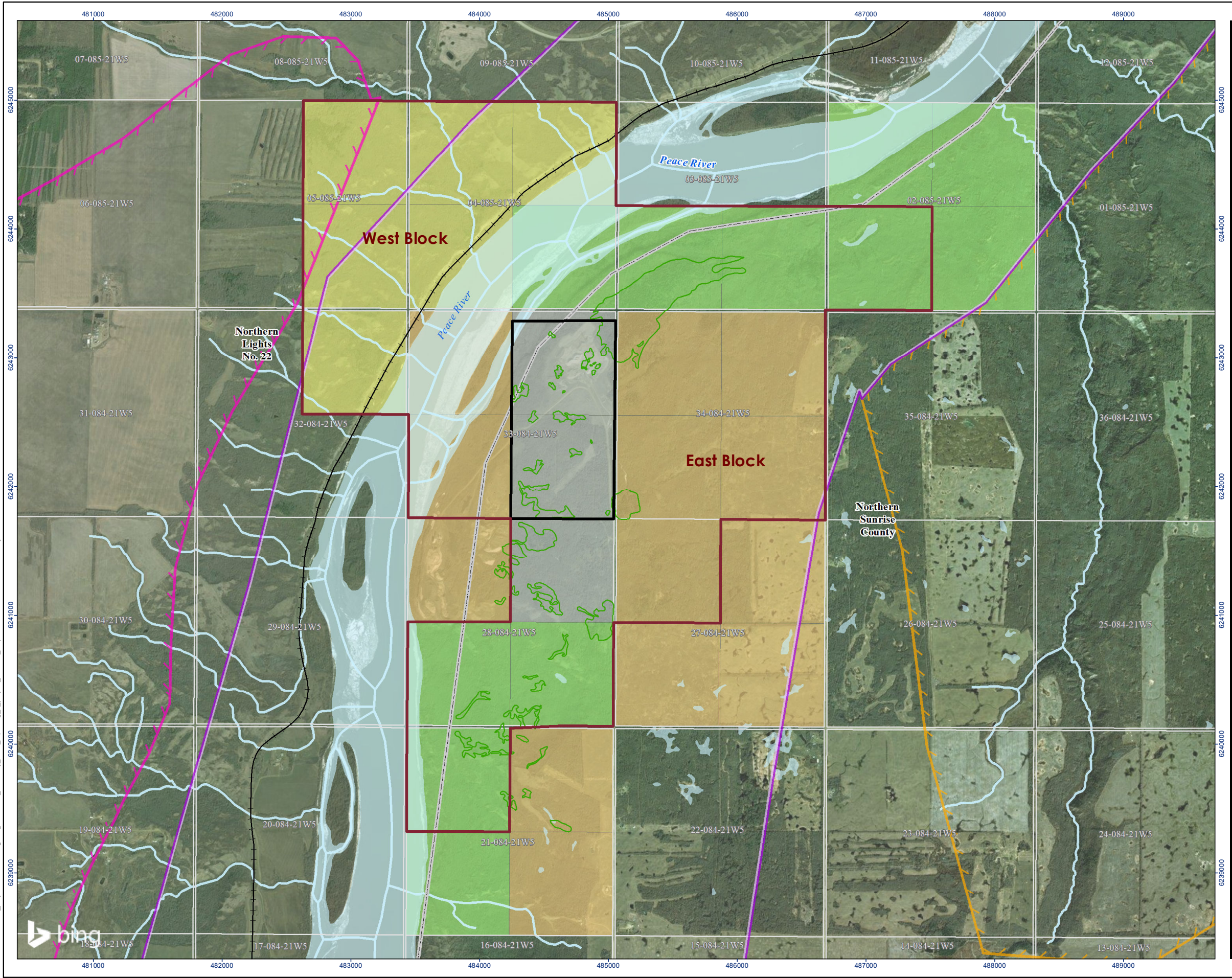


\\cd001-c200shared_projects\110219635\gis\Figures\2021_summary_table_report\fig_1_project_location_map.mxd Revised: 2021-09-30 By: MKuhl



- Metallic and Industrial Mineral (MIM) Permit (No. 930850787)
 - Proposed Mine Boundary
 - Desktop Wetland Mapping for the East Block
 - Railway
 - Watercourse
 - Waterbody
 - Section
 - County Boundary
- Northern Sunrise County Land Use Bylaw Land Use Designation**
- Crown Land District
 - Environmental/Park Reserve
 - Joint Plan Agricultural District 1
 - Natural Resource Extraction
 - Sharp-tailed Grouse Range
 - Key Wildlife Biodiversity Zone
 - Special Access Zone



0 570 1,140 metres
(At original document size of 11x17)
1:30,000

Notes
1. Coordinate System: NAD 1983 UTM Zone 11N
2. Data Sources: Geogratis, ©Department of Natural Resources Canada, All rights reserved. AltaLIS Ltd. (Last modified: 2005-12-23).
3. Background: © 2021 Microsoft Corporation © 2021 Maxar ©CNES (2021) Distribution Airbus DS.
4. Land Use: County of Northern Lights 2012, Land Use Bylaw No. 12-61-290, Northern Sunrise County, 2013, Land Use Bylaw B088/02.



Project Location
T84,85N, R21E
North of Peace River, AB

Prepared by MKuhl on 2021-09-30
QR by MChisholm on 2021-09-30

Client/Project
Source Energy Services Holdings Ltd.
Peace River Silica Mine Regulatory Engagement

110220752

Figure No.
1

Title
Project Location Map